



#14

ADVENTURE TIME



MIKE
HOLMES.

ADVENTURE TIME

CREATED BY

Pendleton Ward

WRITTEN BY

Ryan North

ILLUSTRATED BY

Shelli Paroline & Braden Lamb

LETTERS BY

Steve Wands

"Princess of Rad Hats" (Part Two)

WRITTEN & ILLUSTRATED BY

Chris Schweizer

COVER BY

Mike Holmes

DIGITAL EDITOR:

Megan Brown

DIGITAL DESIGNER:

Sarah Rockwell

ORIGINAL EDITOR:

Shannon Watters

ORIGINAL ASSISTANT EDITOR:

Whitney Leopard

ORIGINAL DESIGNER:

Stephanie Gonzaga

ONIPRESS.COM



/ONIPRESS

PUBLISHED BY ONI-LION FORGE PUBLISHING GROUP, LLC. Hunter Gorinson, president & publisher
Sierra Hahn, editor in chief • Troy Look, vp of publishing services • Spencer Simpson, vp of sales • Angie Knowles, director of design & production • Daniel Crary, director of marketing • Katie Sainz, director of sales, book market • Jeremy Colfer, director of development • Chris Cerasi, managing editor • Bess Pallares, senior editor • Grace Scheipeter, senior editor • Karl Bollers, editor • Megan Brown, editor • Matt Dryer, editor • Gabriel Granillo, editor • Jung Hu Lee, assistant editor • Michael Torma, senior sales manager • Andy McElliott, operations manager • Sarah Rockwell, senior graphic designer • Carey Soucy, senior graphic designer • Winston Gambro, graphic designer • Matt Harding, digital prepress technician • Sara Harding, executive coordinator • Kaia Rokke, marketing & communications coordinator • Joe Nozemack, publisher emeritus

WITH SPECIAL THANKS TO

Kurtis Estes and the wonderful folks at WB and Cartoon Network.



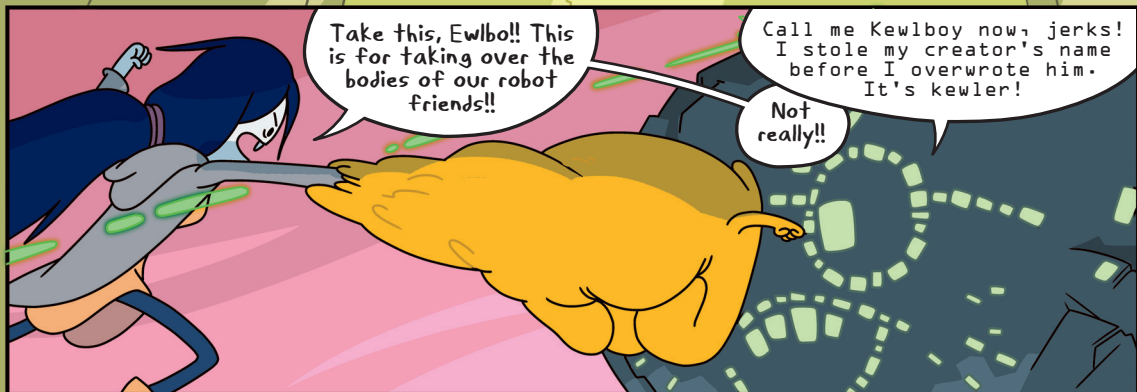
Copyright © 2024 Cartoon Network.
ADVENTURE TIME and all related characters and elements
© & ™ Cartoon Network. WB SHIELD: © & ™ WBEL. (s24)

Adventure Time #14, March 2013. Published by Oni-Lion Forge Publishing Group, LLC, 1319 SE Martin Luther King Jr. Blvd., Suite 216, Portland, OR 97214. ADVENTURE TIME and all related characters and elements are trademarks of and © 2024 Cartoon Network. All rights reserved. Oni Press logo and icon are ™ & © 2024 Oni-Lion Forge Publishing Group, LLC. All rights reserved. Oni Press logo and icon artwork created by Keith A. Wood. The events, institutions, and characters presented in this book are fictional. Any resemblance to actual persons, living or dead, is purely coincidental. No portion of this publication may be reproduced, by any means, without the express written permission of the copyright holders.



When the last issue ended, Marceline and Jake and Finn were being attacked by the Ewlbos computer virus, which infected BMO and then formed a giant robot body out of all the other robots in Ooo! Ewlbos's creator Kewlboy tried to merge with it and stop this, but he failed, and the virus took over!

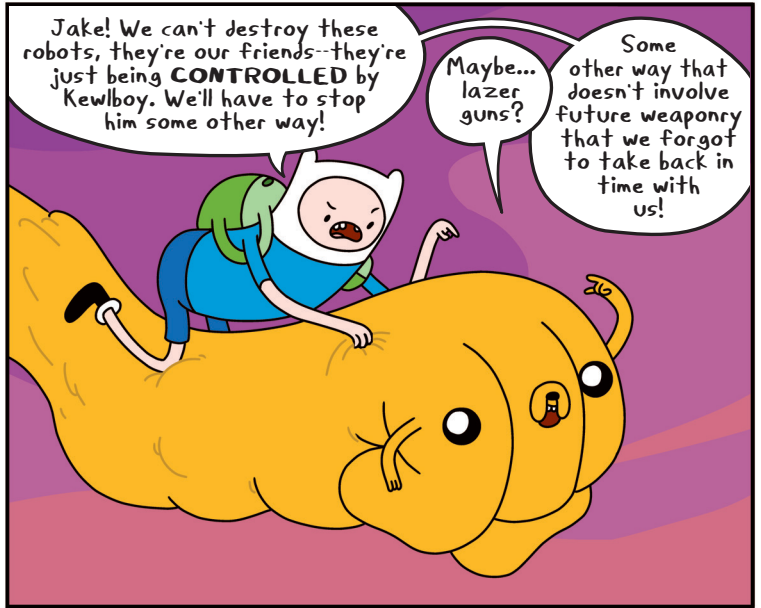
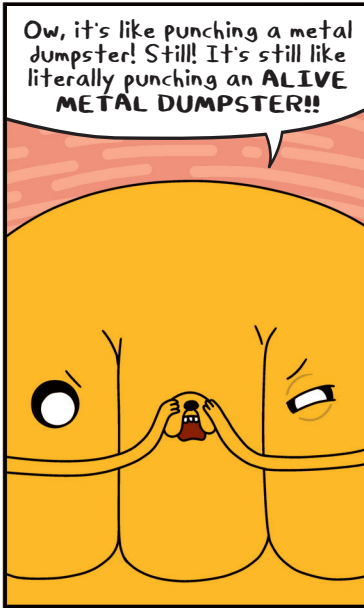
It was even crazier than it sounds, and I already feel pretty crazy just talking about it!!

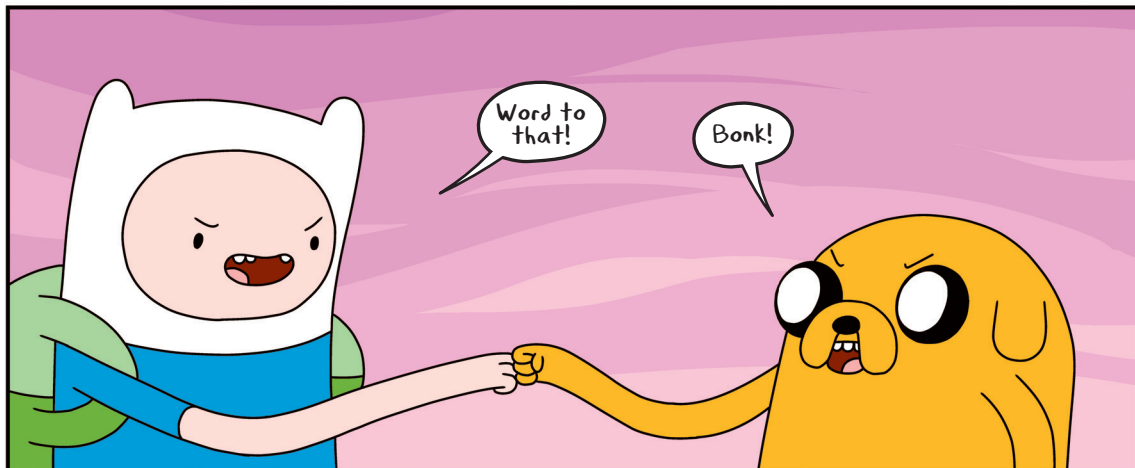
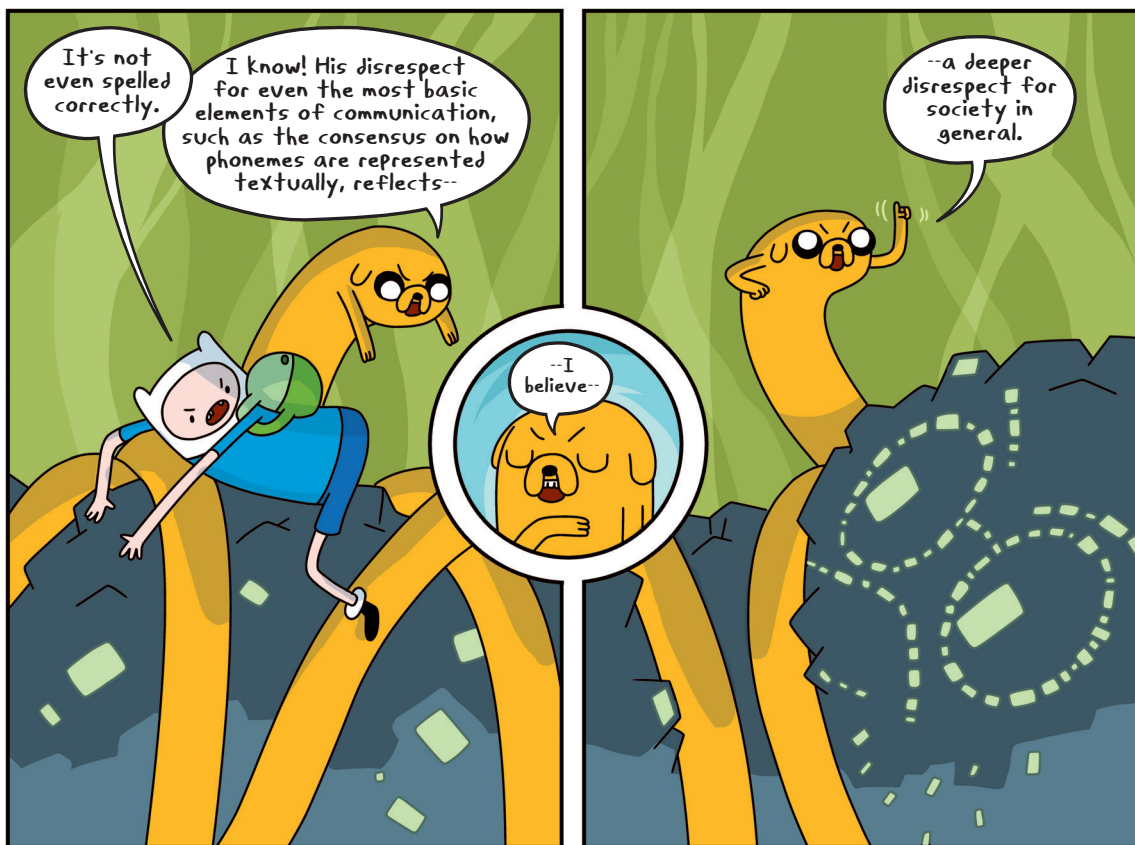
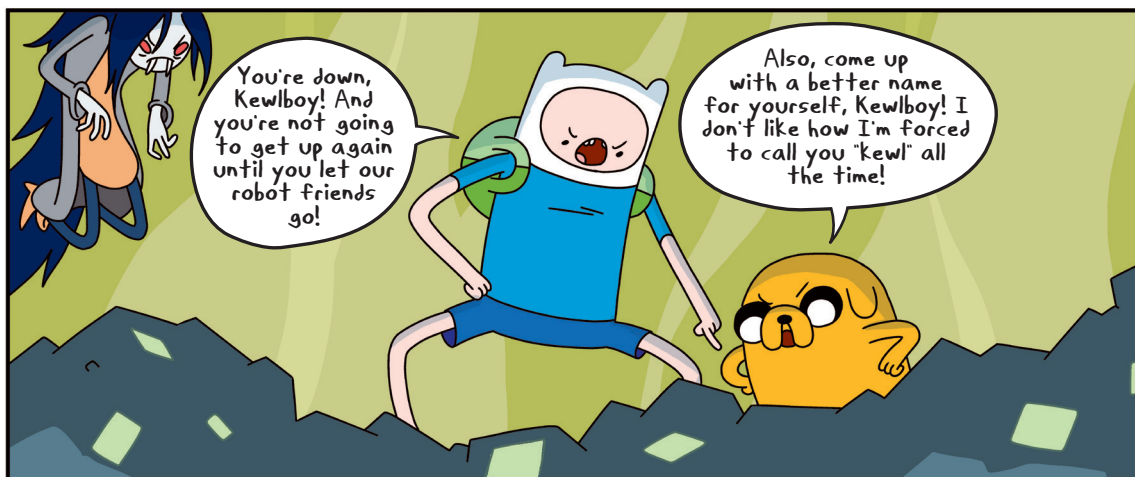


Take this, Ewlbos!! This is for taking over the bodies of our robot friends!!

Call me Kewlboy now, jerks! I stole my creator's name before I overwrote him. It's kewler!

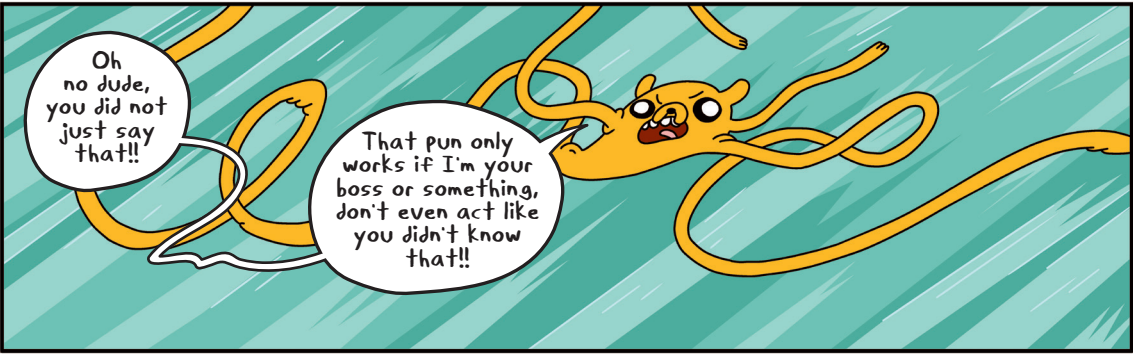
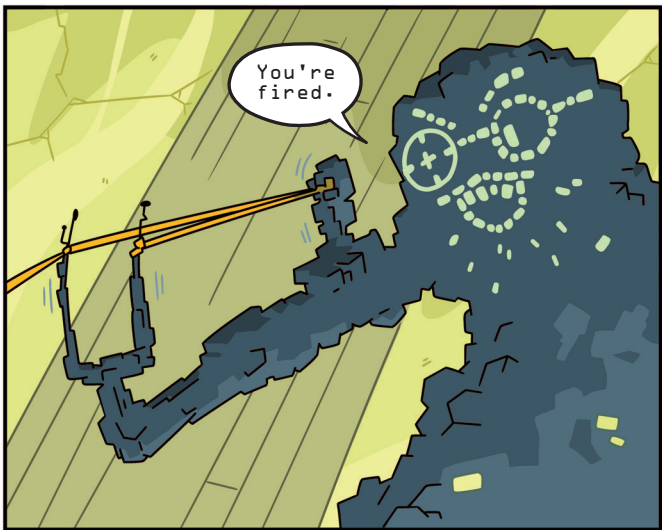
Not really!!

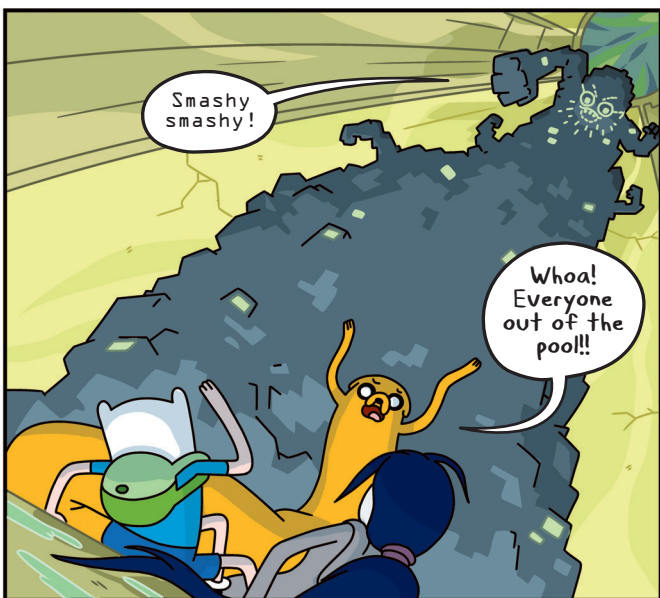






SCIENCE CORNER: if you're concerned how Finn can zipline down Jake without giving his hands a friction burn, I have a 20k-word essay on how Jake uses microscopic cilia to "pass off" Finn's hand to the next cell. It's pretty gross, right?

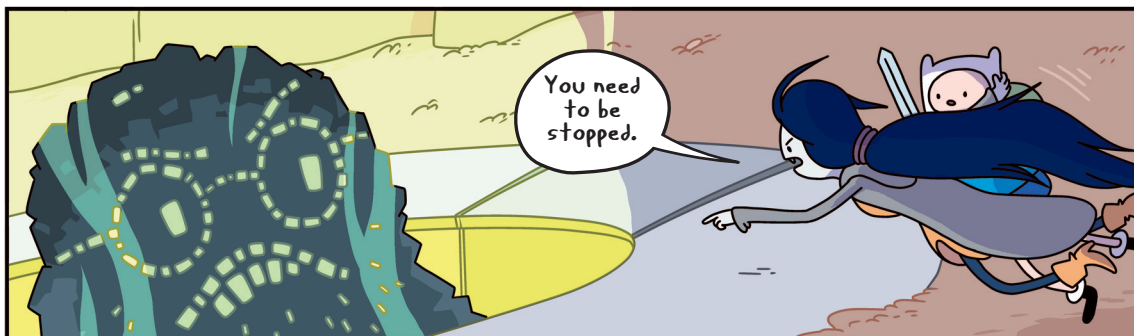


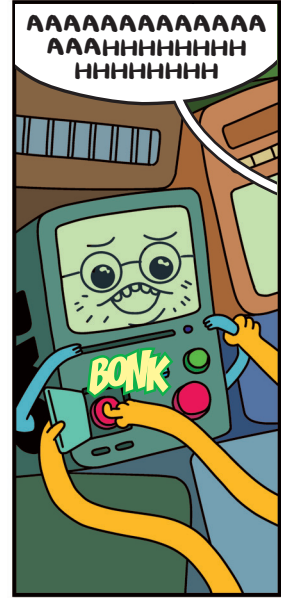
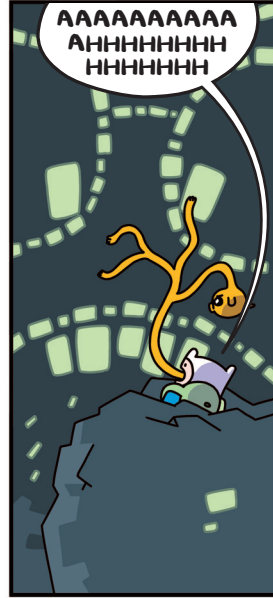
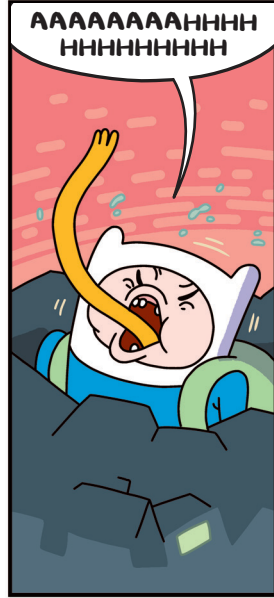
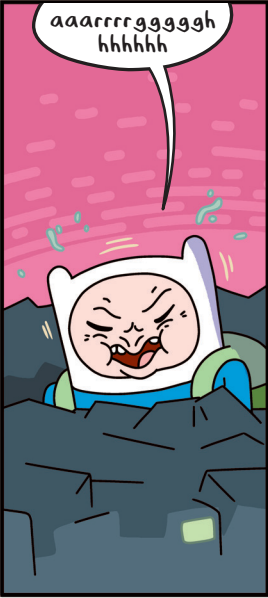
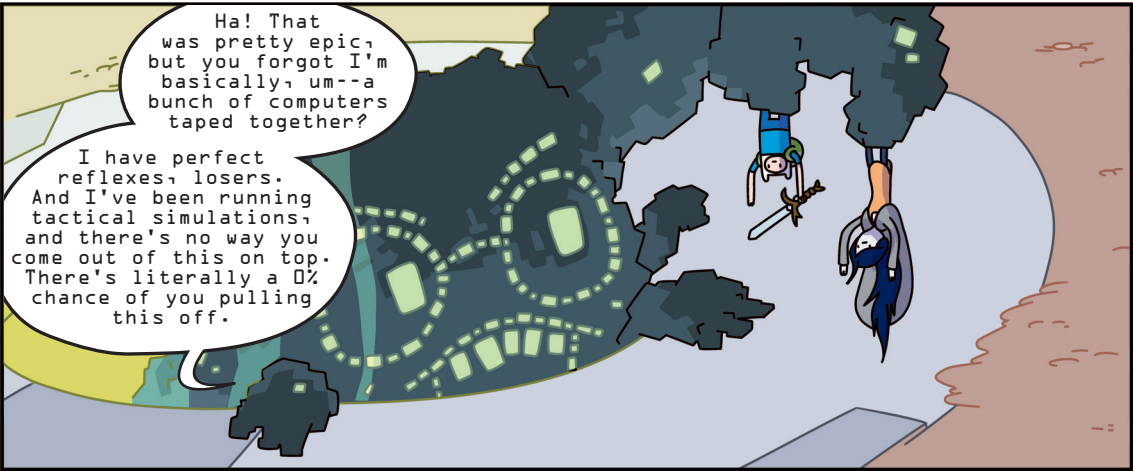


Oh my glob, did Jake really just get squished to death? Why are you even asking me: it's the NEXT pages that know for sure!
LET'S TURN OUR ATTENTION TOWARDS THEM AND FIND OUT...TOGETHER!

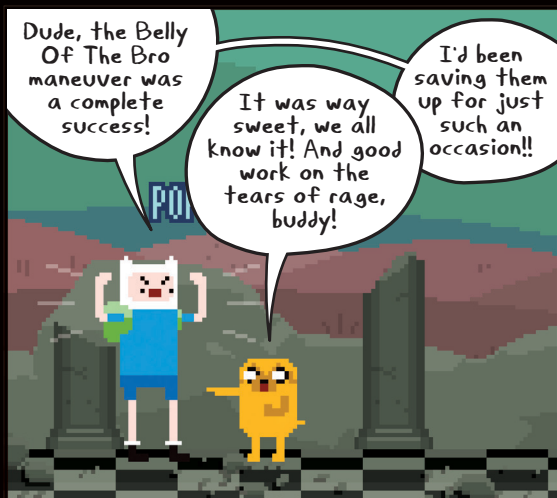


Sometimes you write a character and you think "I love this character! I want to spend time with them and then maybe we could ride bikes and get ice cream!" This jerky computer virus is, to put it delicately, "not such a character".





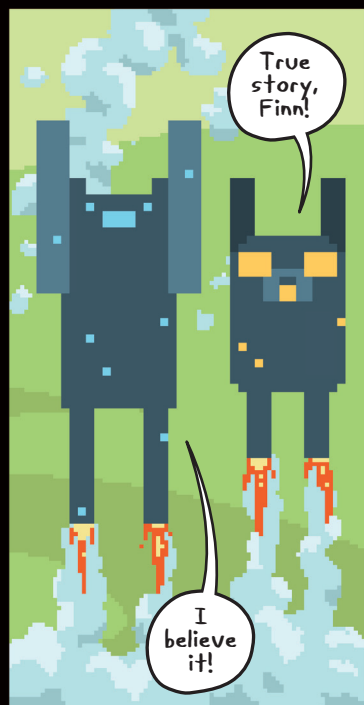
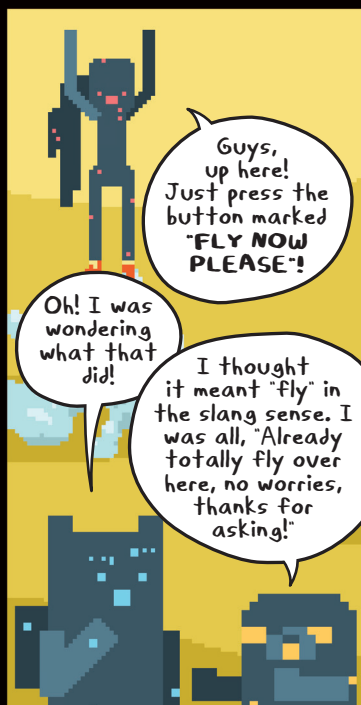
Finn! The magic (dog) was within you the whole time!



"Belly Of The Bro" would also be a really chill name for a sandwich restaurant.

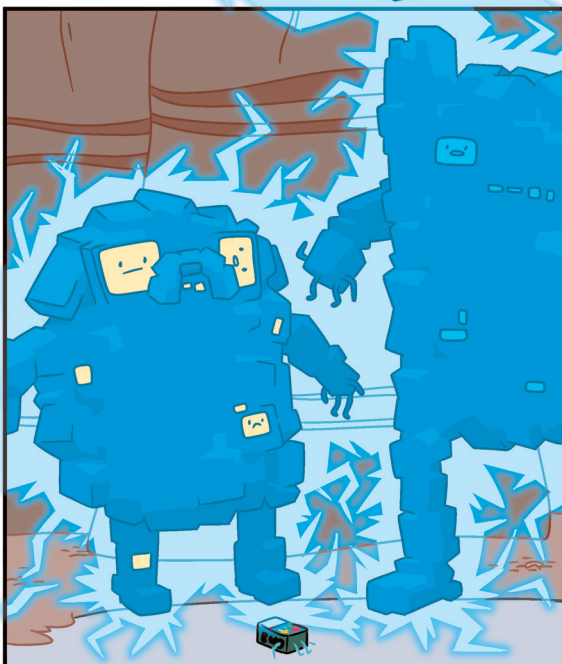
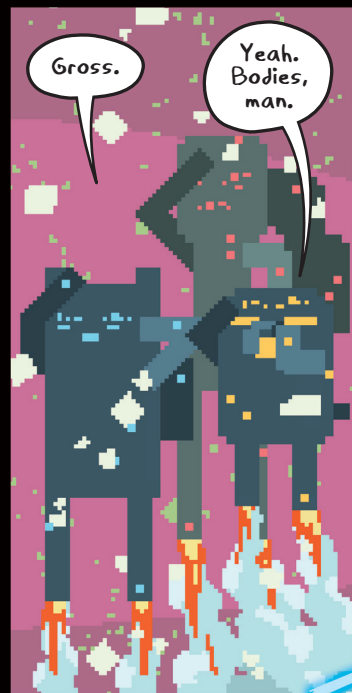




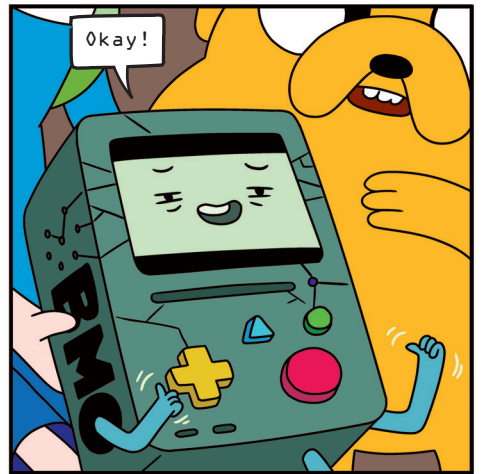




You're an
awful computer
program, Kewlboy!
I hate to say it
but it's totally
true!



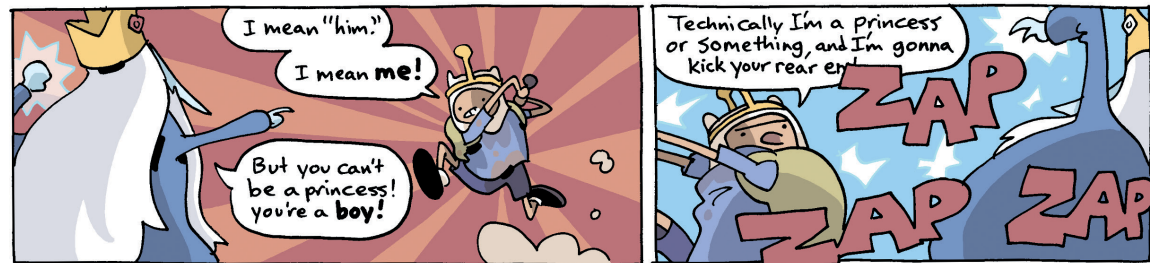
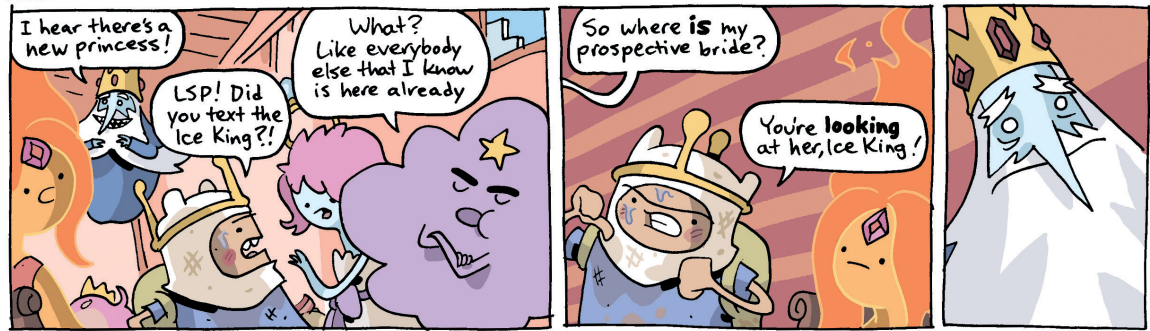
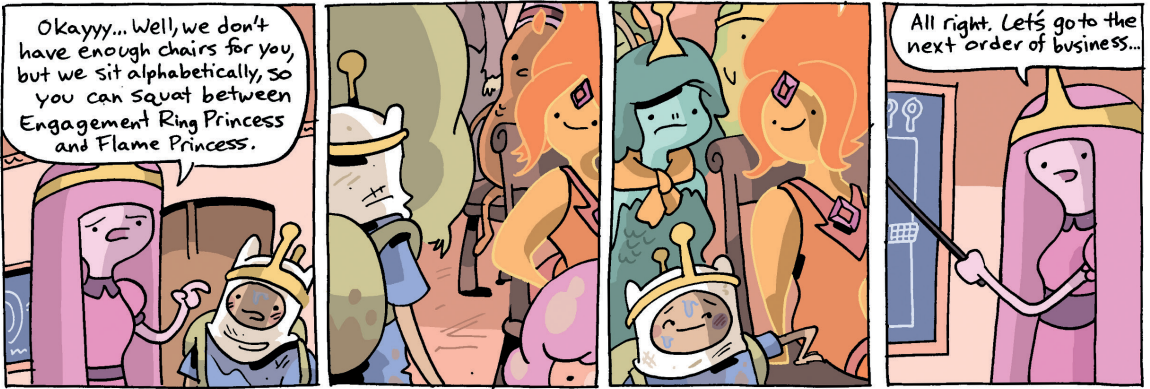
Hey guys! Did everything seem to be projected onto a single two-dimensional plane for anyone else too?

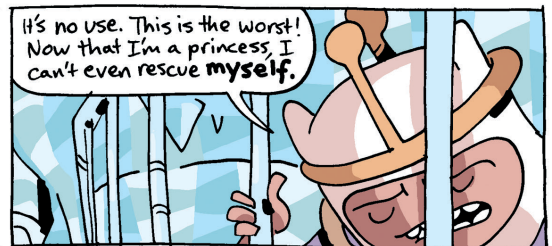
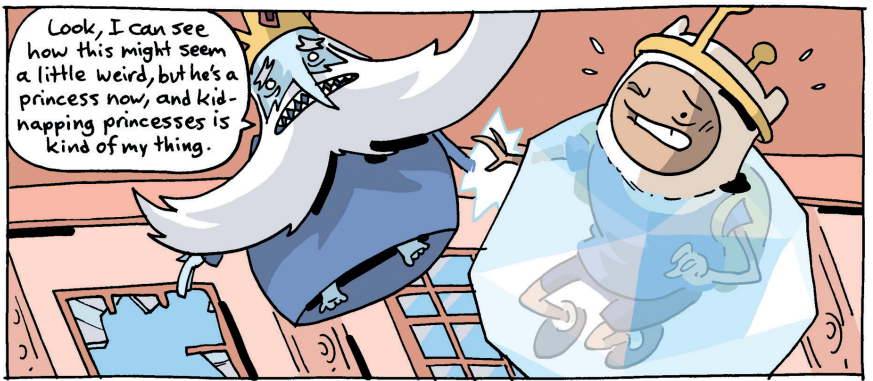


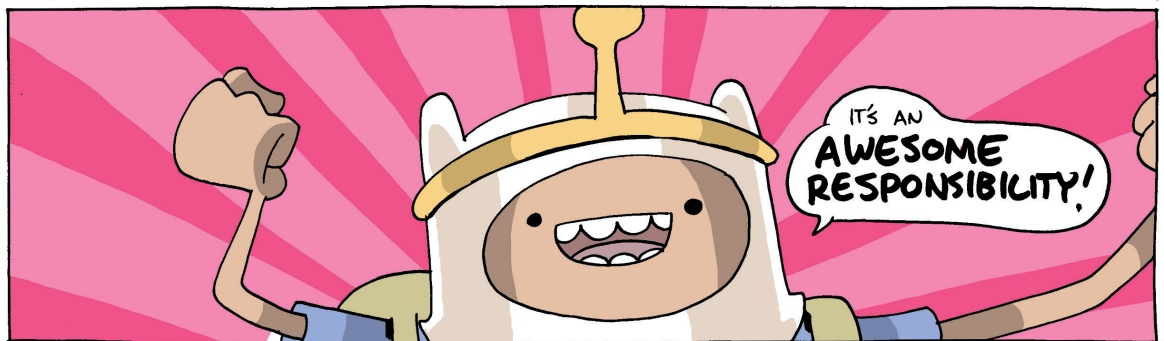
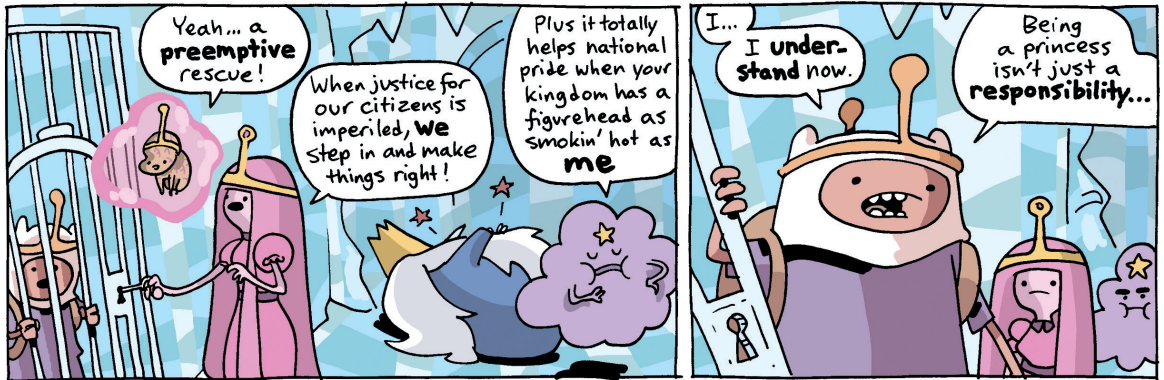
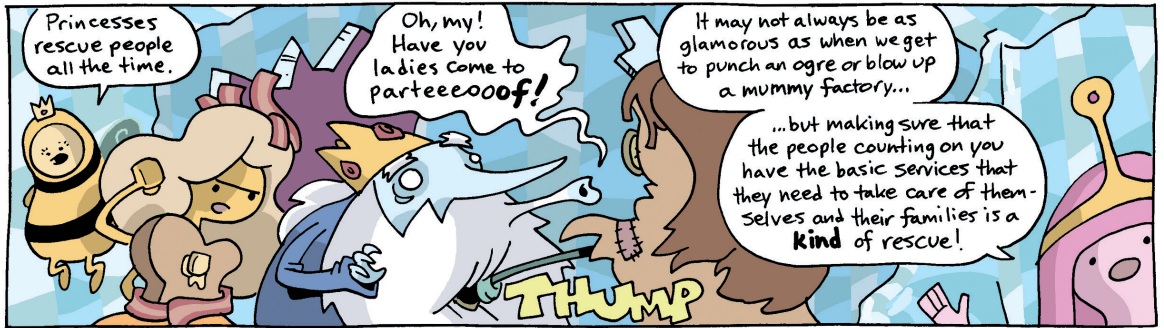
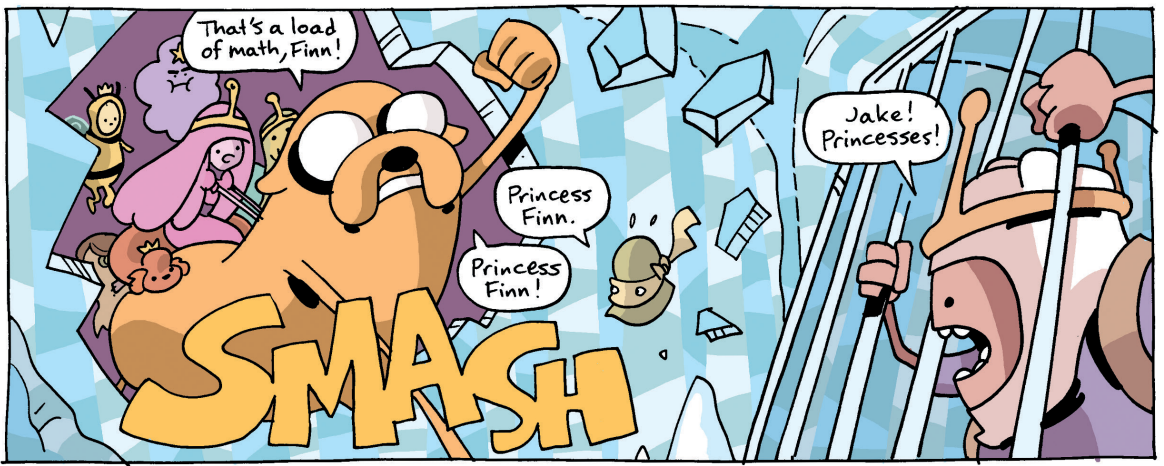
And I'm RELATIVELY SURE they're good for you, too!



And now...Part 2 of THE PRINCESS OF RAD HATS







BEST PRINCESSES EVER

